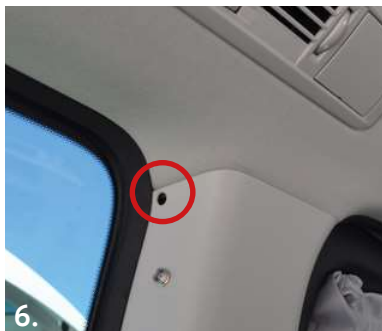


Installation guide

Disassembly Mercedes curtains

1. Disassembly

- The curtain rods (pic. 1) can be disassembled, the fixed curtain rails (pic. 2) can't be disassembled.
- To dismantle the curtain rod, remove the cap in the middle of the rod (pic. 3+4).
- Loosen the screw with a screwdriver (pic. 5).
- When the screw is out, you can slide the rod to the left and right for take out (pic. 6+7).



If you have any further questions please contact us:
+49 (0) 8063 / 20 760 - 0 oder info@vanessa-mobilcamping.de

VanEssa mobilcamping | Lauser Strasse 27 | 83620 Grosshöhenrain | Deutschland
Tel. +49 (0) 8063/20 760-0 | info@vanessa-mobilcamping.de