

Installation guide

Surfer bed with splitting option

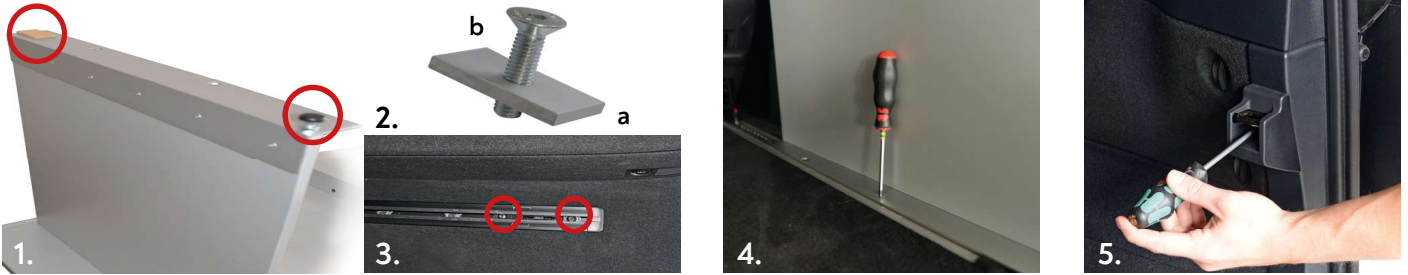
Marco Polo Activity/Horizon

VanEssa
mobilcamping

1. Rear board installation

- Mount adjusting screws (front) and wooden plates (rear) to the underside of the rear board angles (pic. 1).
- Loosen screws of the carriage for the original bed extension and push them maximum to the rear. Fasten again (pic. 3).
- Remove the right panel of the original bed extension (pic. 5).
- Place the slot nuts (a) in the rail system (pic. 2) and position the rear board over the slot nuts.
- Fasten the included countersunk screws (b) through the rear bore holes into the slot nuts.
- Mount the lateral adjusting screw on the left side until it is fixed with the vehicle lining.

Note: Depending on your car's model there's an adjusting screw to remove on the right side.



2. Bed system assembly

- Flap triple-seat bench or single seat and position them about 10cm away from the rear board.
- Lift the front edge of the sleeping board a little and pull it into the passenger compartment until it engages in the connection points. The wooden pillar swings out automatically (pic. 5/8).
- Unfold the mattress(es) into the passenger compartment...and have a good sleep on our cosy VanEssa bed (pic. 6/9).
- Only undivided surfer bed: As an optional fastening, fix the mount with the hammerhead screw in the airline rail and then fix the the wooden pillar to the mount with the star knob screw (pic. 7).



3. Storing

While driving with the sleeping board(s) in storage position, make sure that the bore holes on the bottom are engaged in the fittings of the extension board - especially when it is used without any seats (safety reasons). As an additional fastening, you can fix board(s) and mattress(es) with tension belts (pic. 11).

If you have any further questions please contact us: +49 (0) 8063 / 20 760 - 0

VanEssa mobilcamping | Lauser Strasse 27 | 83620 Grosshöhenrain | Germany
Tel. +49 (0) 8063/20 760-0 | info@vanessa-mobilcamping.de