

Installation guide

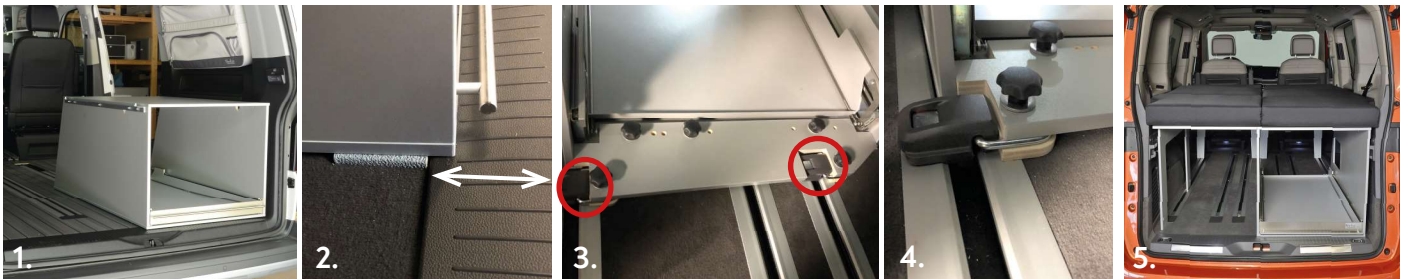
Arco-System - VW T7 Multivan short wheelbase

VanEssa
mobilcamping

(For the installation both original tie-down rings from VW are required!)

1. Arco tunnel installation

- The rear row of seats must be removed.
- Place the tunnel in the rear of the van in such a position that the tailgate can be closed (pic. 1+2).
- Slide the original tie-down rings in the rail until they are each in a recess in the tunnel (pic. 3).
- Place one filler piece under each of the tie-down ring lugs and the fastening plate on the tunnel so that the lugs of the tie-down rings are between them. Turn all 5 hand screws clockwise as far as possible (pic. 4).
- When using only one tunnel, hang the bed extension into the connection points on the side of the tunnel and place the stand upright (pic. 5).

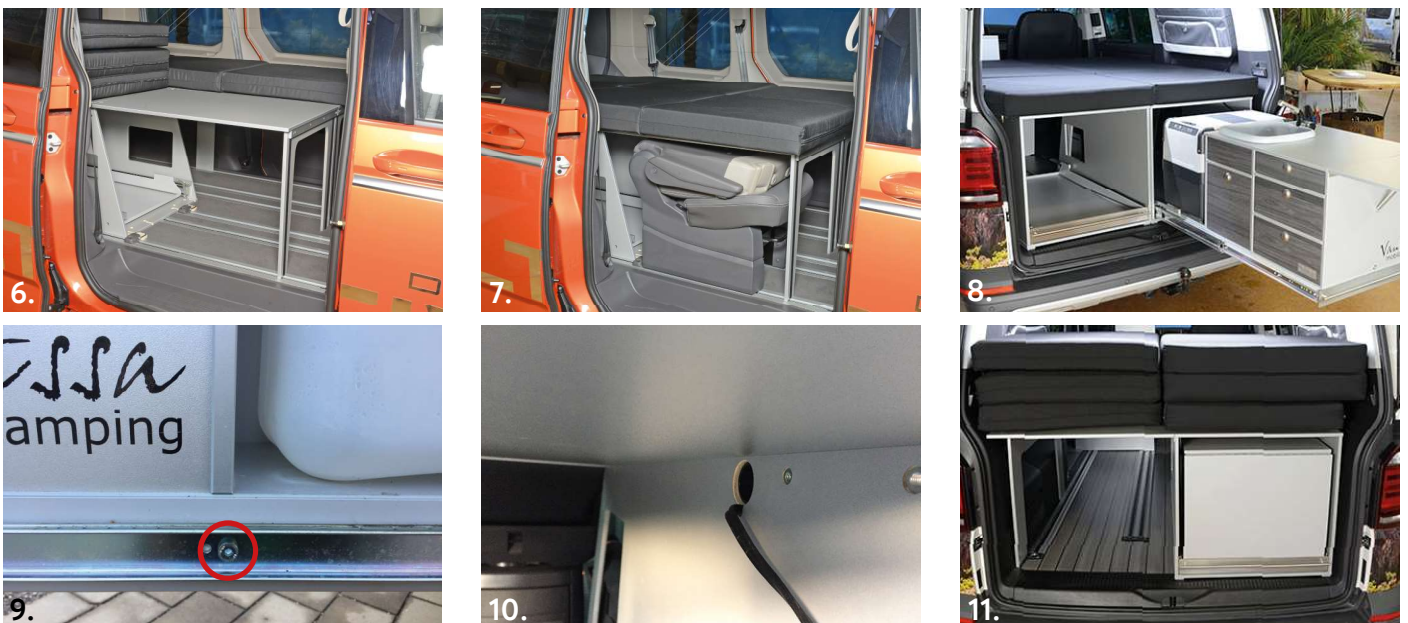


2. Bed system assembly

- Lift the front edge of the sleeping board a little and pull it into the passenger compartment until it engages in the connection points of the tunnel(s). The wooden pillar swings out automatically (pic. 6).
- Unfold the mattress(es) into the passenger compartment...and have a good sleep on our cosy VanEssa bed (pic. 7).

Kitchen assembly:

- When using the kitchen in the tunnel, lift it into the pullout with the drawers facing inwards (pic. 8).
- Secure the kitchen module with the included screw on the outer side (pic. 9).
- Place the coolbox on the console next to the kitchen module. Lead the cable under the console and plug the coolbox in (pic. 8).
- Trimm the cable length, clip it into the plastic plug and push the plug from the outside into the cutout on the side of the tunnel (pic. 10).



3. Storing

While driving with the sleeping board(s) in storage position, make sure that the bore holes on the bottom are engaged in the fittings of the tunnel/bed extension - especially when it is used without any seats (safety reasons). As an additional fastening, you can fix board(s) and mattress(es) with tension belts (pic. 11).

If you have any further questions please contact us: +49 (0) 8063 / 20 760 - 0