

# Installation guide

## Bed system with kitchen Hyundai H1

### 1. Bed system assembly

- Open the folding bracket H and put the open folding bracket into the passenger compartment. The metal plates shown in the pictures are generally not necessary (pic. 1).

*Note:* To close the bracket, press the feather buttons and flap the feet into the aluminium profile.

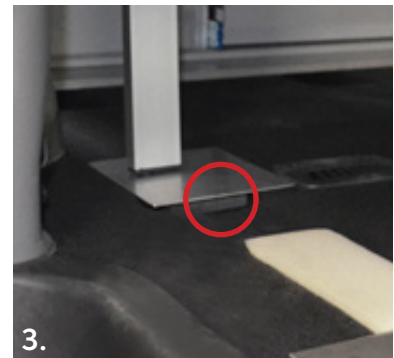
- Hang the folding board into the connection points of the rear kitchen and place it on the bracket H (pic. 2). As a height compensation place the levelling chock into the seat rail (pic. 3).

- In this setup, you can push the (front) seat bench completely to the back (pic. 4).

- For the bed system assembly, move the seat bench to the front and flap the seats.

- Flap the front part of the folding board to the front and place it on the connection points of bracket V (pic. 5).

- Unfold the mattress into the passenger compartment...and have a good sleep on our cosy VanEssa bed (pic. 6)!



### 2. Storing

While driving with the sleeping board in storage position, make sure that the bore holes on the bottom are engaged in the fittings of the extension board - especially when it is used without any seats (safety reasons). As an additional fastening, you can fix board and mattress with tension belts (pic. 7).



If you have any further questions please contact us: +49 (0) 8063 / 20 760 - 0