

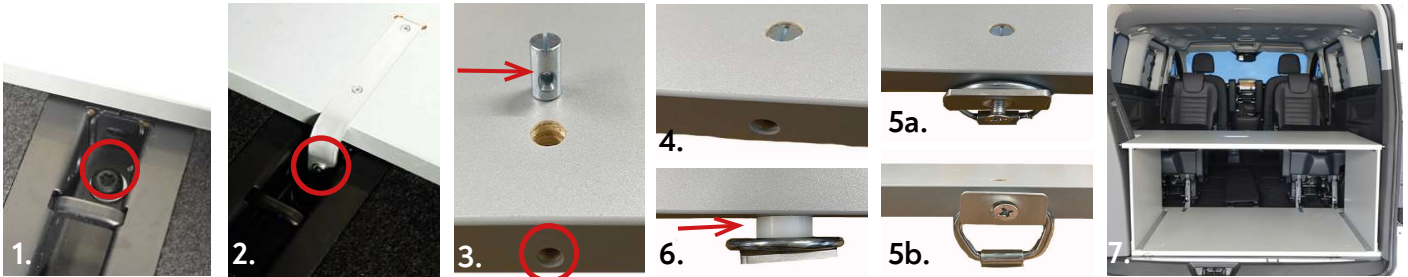
# Installation guide

## Bed system -

## Tourneo Custom/Tourneo Transit - long wheelbase

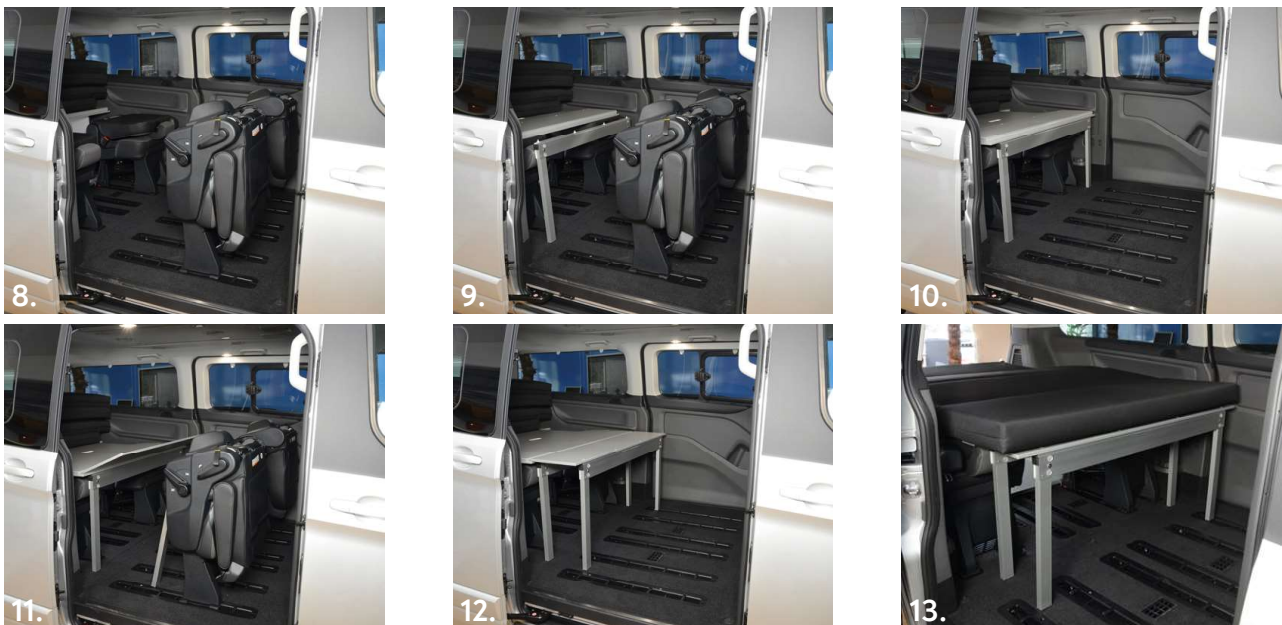
### 1. Rear board installation

- Place the mounting plate in the car and flap up the rear tie-down rings.
- Pull the mounting plate towards the rear so that the screw bolts on the aluminum brackets engage in the holes on the rear edge of the seat rails (pic. 1+2).
- Insert the cross nut bolts into the mounting plate so that the openings are on top of each other (pic. 3-4).
- Fasten the countersunk screws including the aluminum plates into the side of the hole (pic. 5a+b).  
*Note:* before facelift comes a distance sleeve between tie-down ring and aluminum plate (pic. 6).
- Lift the rear board on the mounting plate and fix it left and right to the mounting plate with the M6 countersunk screws (pic. 7).



### 2. Bed system assembly

- Fold the rear seats and flap the front seats - if used - up (pic. 8).
- Open the folding bracket and place the open bracket in front of the rear seats (pic. 9).  
*Note:* To close the bracket, press the feather buttons and flap the feet into the aluminium profile.
- Lift the front edge of the sleeping board a little and pull it into the passenger compartment until it engages in the connection points of the rear board.
- Place the sleeping board on folding bracket H (pic. 10).
- Open folding bracket V and place it behind the front seat row (pic. 11).
- Flap the front part of the sleeping board and place it on the folding bracket V (pic. 12).
- Unfold the mattress into the passenger compartment...and have a good sleep on our cosy VanEssa bed (pic. 13).



### 3. Storing

While driving with the sleeping board in storage position, make sure that the bore holes on the bottom are engaged in the fittings of the rear board - especially when it is used without any seats (safety reasons). As an additional fastening, you can fix board and mattress with tension belts (pic. 14).



If you have any further questions please contact us:  
+49 (0) 8063 / 20 760 - 0 oder [info@vanessa-mobilcamping.de](mailto:info@vanessa-mobilcamping.de)