

Installation guide

Coolbox plate Dometic CF(X)35/CF(X)40 - Mercedes with rail system

1. Preparation & installation

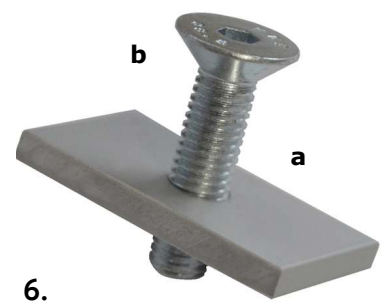
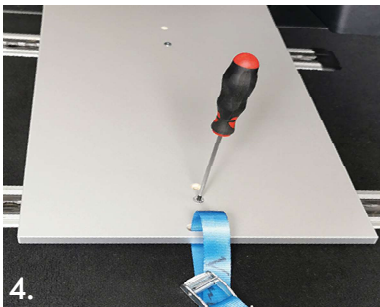
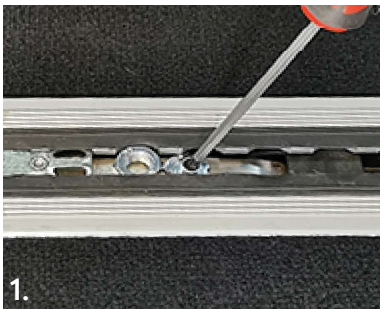
Note: Check the position of the plate with coolbox before fastening the screws, because afterwards the position of the plate can not be changed.

Variant with single seat sledge:

- Drive the fastening sledge of the driver's side single seat to the desired position.
- Lay the thread nut into the slot and push it laterally until the thread itself is positioned between two slots. Therefore you need to push the feather of the sledge a little down (pic. 1).
- Position the included screw nuts in the slots left and right of the thread nut, so that the nut gets locked (pic. 2).
- Place the coolbox plate on top of the inserted thread nuts with the lower bore holes being congruent with the thread nuts (pic. 3).
- Fix the coolbox plate by screwing the two M6 countersunk screws into the screw nuts (pic. 4).

Variant without single seat sledge:

If the seat fastening is needed for a seat, place the slot nuts (a) in the rails (pic. 5), place the plate behind the driver's seat and fasten it with M8 countersunk screws (b) into the slot nuts (pic. 6).



2. Coolbox fastening

- Mount the handles included in the coolbox accessories on the front and back side of the coolbox (pic. 7).
- Place the box on the coolbox plate and thread the lashing straps through the handles.
- Tighten the straps until the coolbox stands solid on the plate (pic. 8).



If you have any further questions please contact us: +49 (0) 8063 / 20 760 - 0