

Installation guide

Module tower -

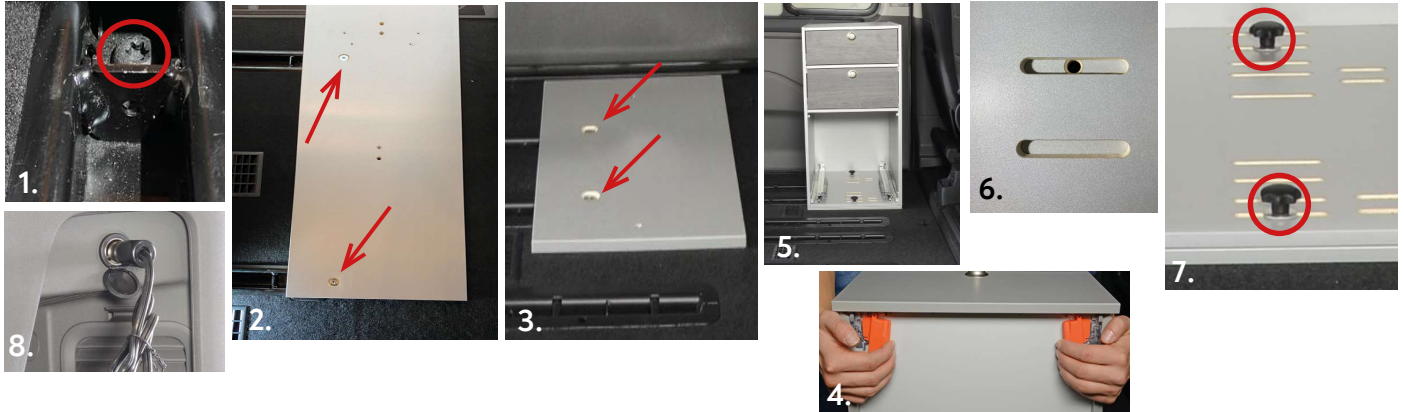
Ford Tourneo/Transit Custom (short and long wheelbase)

ALWAYS close the drawers and lock it before driving! Otherwise the drawers could damage the tower.

1. Installation & Fastening

- Unscrew the two original screws in the rails behind the driver's seat (pic. 1).
Note: pic 2 with 4 rails (2-seater bench), pic. 3 with 6 rails
- Place the mounting plate over the holes. Screw the plate tight with the M12 screws (pic. 2 or 3).
- Remove the drawers of the module tower to reduce weight.
Note: Push the orange clips at the bottom of the drawers simultaneously and take it out (pic. 4).
- Place the tower module behind the driver's seat, with the slots above the holes of the mounting plate and fix it with the hand screws (pic. 5-7).

Module with coolbox pullout: Put the cable from the tower into a 12 Volt socket (pic. 8).



2. Pull-out table

- Open the second drawer and pull the above table out by grabbing the little notch at the bottom (pic. 9).
- Once in a while the table can clamp. If so, push the plate to unlock and then pull again.
- While extended, the table rests on the second drawer. The drawer needs to be pulled out at least half length (pic. 10+11).
- Always insert the drawer first and the table afterwards.



3. Additional top cabinet

- Place the top cabinet on the tower so that the threads of the top cabinet and tower are on top of each other (pic. 12).
- Open the top door and use the two knurled screws to fix it (pic. 13+14).
- In addition, fasten the attachment with a lashing strap to the headrest of the driver's seat (pic. 15+16).



4. Module tower T2

When using the toilet, place the delivered board in front of the lower drawer to give supplementary stability to the drawer (pic. 17+18).

Tip: We recommend to place a little rug above the board.



5. Module tower with coolbox pullout

- Place the coolbox on the pullout of the bottom drawer (tilt the box a little to the back).
- Before closing the drawer, plug in the 12V-cable to the coolbox.
- Draw the included spring with the screw in one of the threads at the back of the coolbox, then hang the spring into the cable. This avoids the cable to be clamped (pic. 19).
- We recommend not to prolong the included 12V-cable.



If you have any further questions please do not hesitate to contact us:

+49 (0) 8063 / 20 760 - 0 oder info@vanessa-mobilcamping.de

VanEssa mobilcamping | Lauser Strasse 27 | 83620 Grosshöhenrain | Deutschland

Tel. +49 (0) 8063/20 760-0 | info@vanessa-mobilcamping.de