

Installation guide

Module tower - T5/T6/T6.1 Multivan/Beach

VanEssa
mobilcamping

ALWAYS close the drawers and lock it before driving! Otherwise the drawers could damage the tower.

1. Installation & fastening

- Remove the drawers of the module tower to reduce weight.

Note: To remove the drawers just press the orange clips and pull out the drawers (pic. 6).

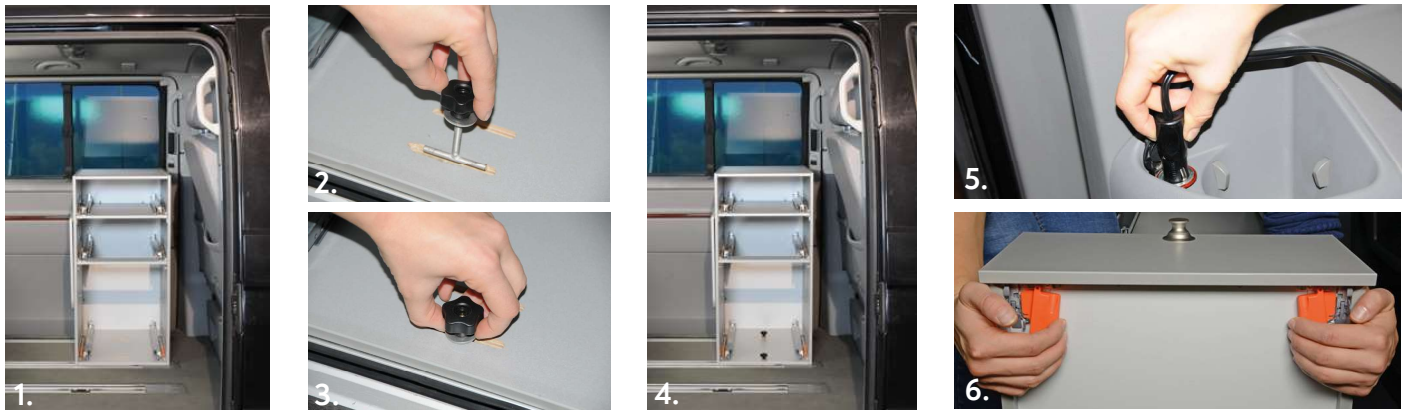
- Place the tower behind the driver's seat (in driving position) with the slots exactly above the rails (pic. 1).

- Put the T of the hammerhead screw through the slots into the rails. By dint of the neoprene disc, jack-knife the T and finally tighten the knob while holding the T-part in position (pic. 2-4).

Note: The screws are being anchored shifted in the notches on the underside of the rails (doesn't engage exactly in a 90° angle.)

- Now you can place the drawers on the rails and push them into the tower. It will automatically click in position.

- Module with coolbox pullout: Put the cable from the tower into a 12 Volt socket (pic. 5).



2. Pull-out table (not with T0)

- Open the second drawer and pull the above table out by grabbing the little notch at the bottom (pic. 7).

- Once in a while the table can clamp. If so, push the plate to unlock and then pull again.

- While extended, the table rests on the second drawer.

The drawer needs to be pulled out at least half length (pic. 8+9).

- Always insert the drawer first and the table afterwards.



3. Additional top cabinet (not with T0)

Place the top cabinet on the tower and use the two knurled screws to fix it (pic. 10-12).

In addition, fasten the attachment with a lashing strap to the headrest of the driver's seat (pic. 13+14).



4. Module tower T2/T0 with toilet

When using the toilet, place the delivered board in front of the lower drawer to give supplementary stability to the drawer (pic. 15+16).

Tip: We recommend to place a little rug above the board.



5. Module tower with coolbox pullout

- Place the coolbox on the pullout of the bottom drawer (tilt the box a little to the back).

- Before closing the drawer, plug in the 12V-cable to the coolbox.

- Draw the included spring with the screw in one of the threads at the back of the coolbox, then hang the spring into the cable. This avoids the cable to be clamped (pic. 17).

- We recommend not to prolong the included 12V-cable.

If you have any further questions please do not hesitate to contact us:

+49 (0) 8063 / 20 760 - 0 or info@vanessa-mobilcamping.de

VanEssa mobilcamping | Lauser Strasse 27 | 83620 Grosshöhenrain | Germany
Tel. +49 (0) 8063/20 760-0 | info@vanessa-mobilcamping.de