

Installation guide

Module tower - Mercedes with rail system

ALWAYS close the drawers and lock it before driving! Otherwise the drawers could damage the tower.

1. Installation & Fastening

- Remove the drawers of the module tower to reduce weight.

Note: Push the orange clips at the bottom of the drawers simultaneously and take it out (pic. 6).

Variant 1: - Push the front seat fastenings to the front, with the fastening bolts standing parallel (use a screwdriver to push the carriage down and move it).

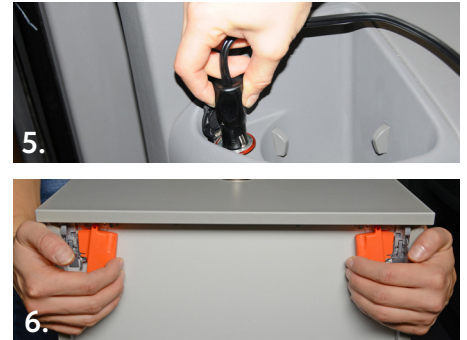
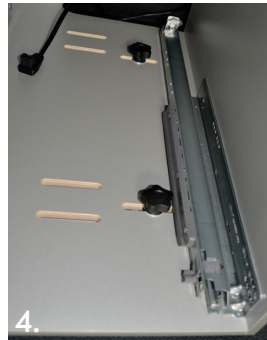
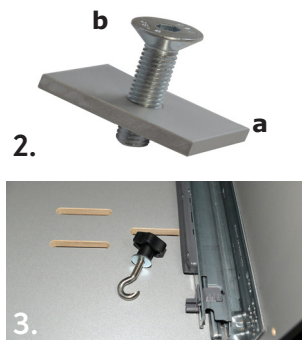
- Place the tower module behind the driver's seat (in the preferred driving position), with the slots in the bottom of the module over the seat fastening bolts (pic. 1).

- Push the screw hooks through the slots, hook them under the bolts and fasten them hand-tight (pic. 3+4).

Variant 2: - If the seat fastening is needed for a seat, place the slot nut (a) in the rail, place the module tower behind the driver's seat and fasten it with a countersunk screw (b) into the slot nut (pic. 2).

- Now you can place the drawers on the rails and push them into the tower. It will automatically click in position.

- Module tower T3 with coolbox: Put the cable from the tower into a 12 Volt socket (pic. 5).



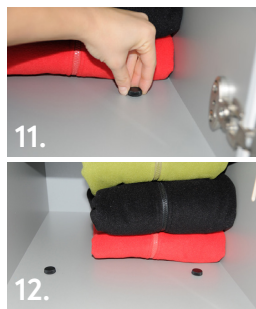
2. Pull-out table (included with all models)

- The pull-out table is located below the first drawer.

- Open the second drawer and pull the table out by grabbing the little notch at the bottom (pic. 7).

- Once in a while the table can tilt. If it doesn't work instantly, push a little bit first and then pull again.

- While extended, the table rests on the second drawer. The drawer has to be pulled out at least half length (pic. 8+9).



3. Additional top cabinet (optional for all models)

Place the top cabinet on the tower and use the two knurled screws to fix it (pic. 10-12).



4. Module tower T2 with toilet

When using the toilet, place the delivered board in front of the lower drawer to give supplementary stability to the drawer. We recommend to place a little rug above the board (pic. 13+14).



5. Module tower with coolbox pullout/module tower T3 with kitchen

- Place the coolbox on the pullout of the bottom drawer (tilt the box a little to the back).
- Before closing the drawer, plug in the 12V-cable to the coolbox - the access to the back of the coolbox is unhandy if the drawer is engaged.

- Draw the included spring with the screw in one of the threads at the back of the coolbox, then hang the spring into the cable. The spring holds the cable up and thereby avoids the cable to be clamped between the rails of the drawer (pic. 15).

If you have any further questions please do not hesitate to contact us:

+49 (0) 8063 / 20 760 - 0 or info@vanessa-mobilcamping.de