

Installation guide

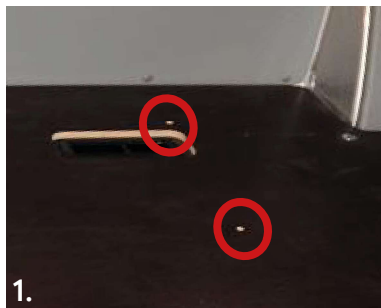
Storing box - T5/T6/T6.1 Transporter/Caravelle

VanEssa
mobilcamping

1. Preparation & installation

- A stable installation of a storing box in the VW T5/T6/T6.1 Transporter or Caravelle is only possible with a VanEssa-floor panel with included screw-in nuts (pic. 1).
- Put the storing box behind the driver's seat with the bore holes precisely over the screw-in nuts of the floor plate (pic. 2).
- Fix the storing box with the include star knob screws (pic. 3).

Note: The storing box with included toilet function gets fixed with countersunk screws instead of the star knob screws.



2. Use of the toilet

- For installation of the box, take the toilet out of the box (pic. 5).
 - When using the box, open the seat cushion.
- Note: With the smallest storing box (size 47 cm), the cushion needs to be opened to the back.
- For flushing the toilet, pull the handle through the cutout on the front side of the box (pic. 6).



If you have any further questions please contact us: +49 (0) 8063 / 20 760 - 0

VanEssa mobilcamping | Lauser Strasse 27 | 83620 Grosshöhenrain | Germany
Tel. +49 (0) 8063/20 760-0 | info@vanessa-mobilcamping.de