

Einbauanleitung

VanEssa
mobilcamping

Storing box - Spacetourer XL/Traveller L3/Proace Verso L2/Zafira Life L

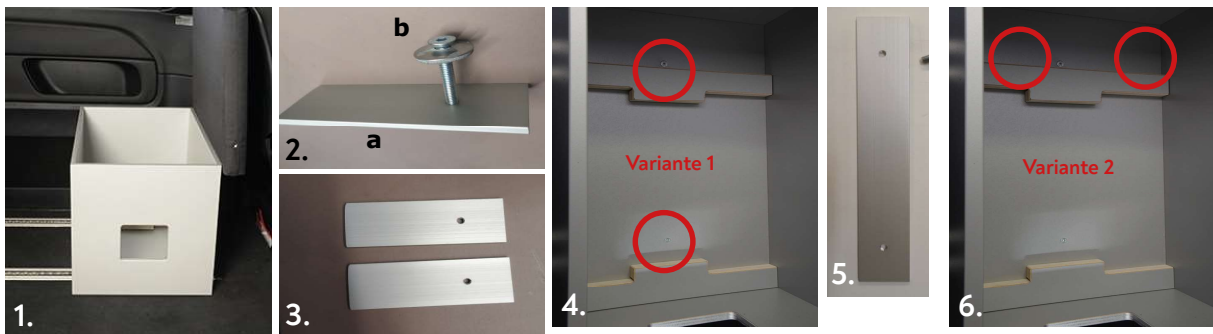
1. Preparation & installation

Variant 1:

- With 2 rails on the driver's side, place the two aluminum plates (pic. 2a/3) in one rail each behind the driver's seat.
- Place the storing box behind the driver's seat (in the preferred driving position), with the slots in the bottom of the module over the Aluminum plates (pic. 1).
- Push the screw hooks (pic. 2b) through the slots, hook them under the bolts and fasten them hand-tight (pic. 4).

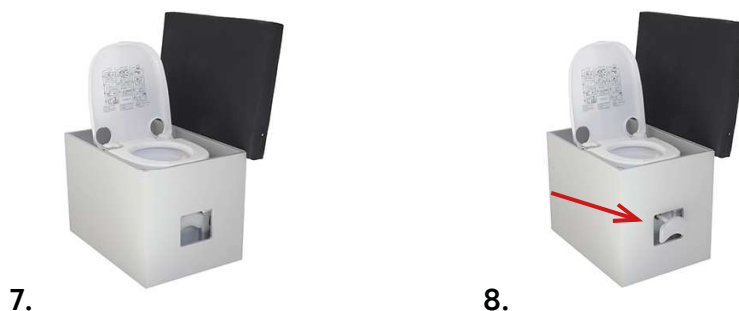
Variant 2:

- If there is only one rail on the driver's side, place the longer aluminum plate with 2 holes (pic. 5) in this rail.
- Place the storing box behind the driver's seat (in the preferred driving position), with the slots in the bottom of the module over the Aluminum plates (pic. 1).
- Push the screw hooks (pic. 2b) through each slots, hook them under the bolts and fasten them hand-tight (pic. 6).



2. Use of the toilet

- For installation of the box, take the toilet out of the box (pic. 7).
- When using the box, open the seat cushion.
Note: With the smallest storing box (size 47 cm), the cushion needs to be opened to the back.
- For flushing the toilet, pull the handle through the cutout on the front side of the box (pic. 8).



If you have any further questions please contact us: +49 (0) 8063 / 20 760 - 0