

Installation guide

V1 kitchen -

Tourneo Custom/Transit Custom - long wheelbase

VanEssa
mobilcamping

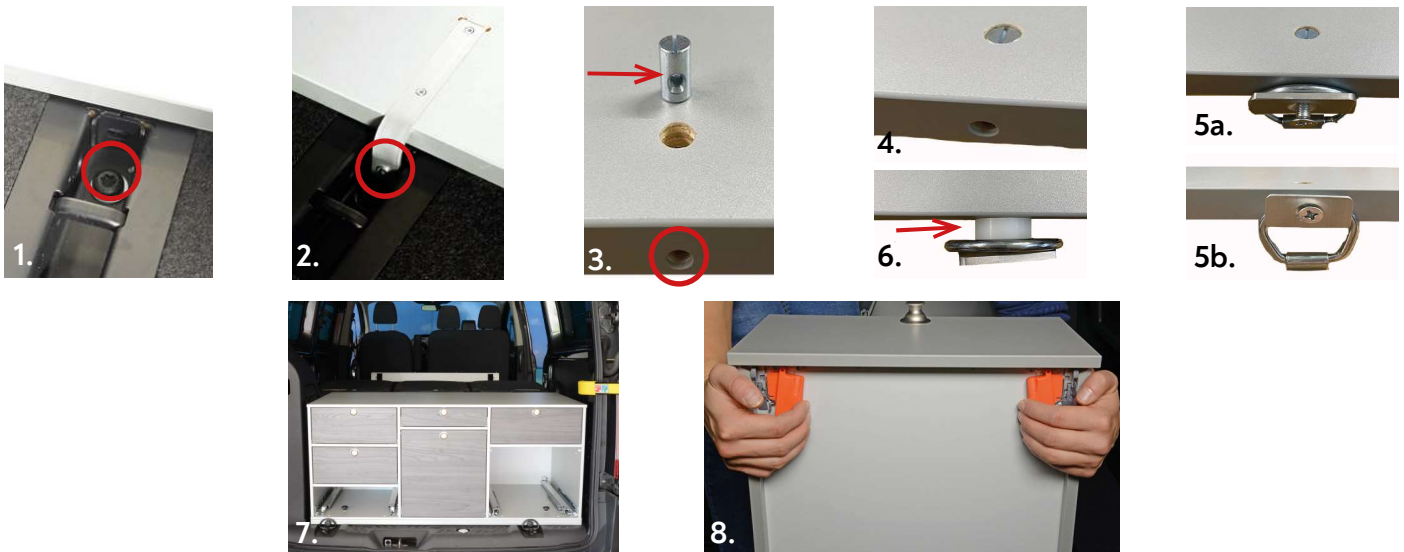
1. Rear board installation

- Place the mounting plate in the car and flap up the rear tie-down rings.
- Pull the mounting plate towards the rear so that the screw bolts on the aluminum brackets engage in the holes on the rear edge of the seat rails (pic. 1+2).
- Insert the cross nut bolts into the mounting plate so that the openings are on top of each other (pic. 3-4).
- Fasten the countersunk screws including the aluminum plates into the side of the hole (pic. 5a+b).

Note: before facelift comes a distance sleeve between tie-down ring and aluminum plate (pic. 6).

- Lift the kitchen on the mounting plate (pic. 7).
- The drawers can be taken out in order to reduce the kitchen's weight.

Note: Push the orange clips at the bottom of the drawers simultaneously and take it out (pic. 8)



2. Fastening

- Fix the kitchen left and right on front and back to the mounting plate by screwing the star knob screws through the kitchen bottom into the screw-in nuts of the plate (pic. 9-11).
- Push the drawers back into the kitchen until they engage.



3. Electrics & Water tank

- Plug the cable from the kitchen into a 12 Volt socket. Draw the included spring with the screw in one of the threads at the back of the coolbox. The spring holds the cable up and thereby avoids the cable to be clamped (pic. 12+13).
- The opening lid must be adjacent to the fridge/freezer. The water hose has to be placed like a loop (pic. 14).
- Empty water tank and hose completely after touring to avoid frost damage, calcification, bacteria etc..



If you have any further questions please do not hesitate to contact us:
+49 (0) 8063 / 20 760 - 0 or info@vanessa-mobilcamping.de